

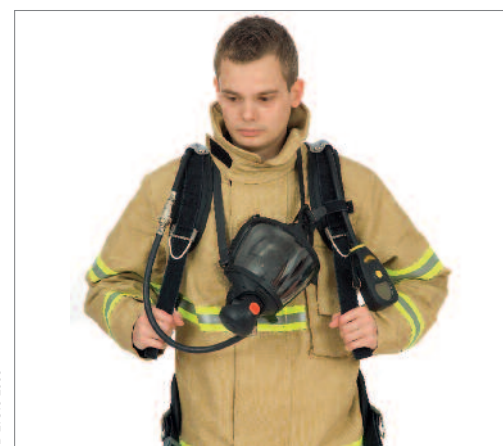
## Donning and Start Up Procedure Dräger PSS® 7000 with Bodyguard® 7000



Height adjustment by squeezing the two buttons and lifting yoke. **Small, Medium, Large** positions available.



Fully extend all straps and place SCBA over one shoulder, then other harness over remaining shoulder.



Place facemask, via strap, around neck. Pull down on shoulder straps of SCBA until waistbelt pad aligned with hips.



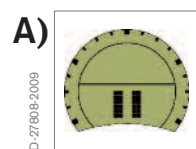
Connect waistbelt buckle and pull adjusting straps as shown until apparatus is secure. Tuck loose ends into belt.



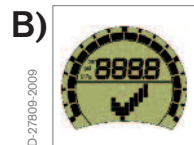
Press red LDV button to switch off positive pressure.



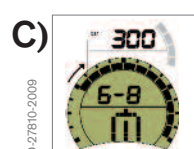
Fully open the cylinder valve (slowly) to pressurize the system. Display will emit single beep and self check sequence will begin.



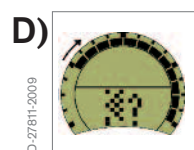
A) Initial display



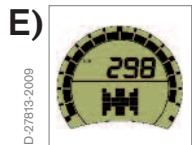
B) All display features illuminate, Backlight, Blue, Red and single Green LED's will illuminate.



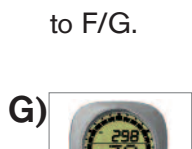
C) Programmed cylinder e.g. 6.8 litres alternates with pressure, e.g. 300 bar and the number of cylinders (1 or 2). The outer radial segments will illuminate fully and then begin to switch off one segment at a time from the left (clockwise). Once all segments are off, leak test icon (D) will be shown.



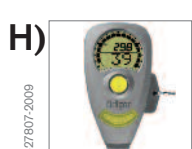
D) The outer radial segments will again illuminate fully and then begin to switch off one segment at a time from the left (clockwise) until all are off and the motion sensor icon (E) will be momentarily displayed.



E) Motion sensor active.



F) The display will quickly change to F/G.



G) **Button Version:** Cylinder pressure and initial Time to Whistle (TTW) are shown. Green LED continuously flashes (1 second intervals).



H) **Tally Version:** (after removing tally) Cylinder pressure is shown. Green LED continuously flashes (1 second intervals).



Holding facemask as shown, place over head with centre plate to the back. Placing chin in facemask chin cup, tighten lower then upper straps (holding breath). Tighten centre strap if necessary.



First breathe will switch LDV to positive pressure mode. Inhale and hold breath – there must be no leak (audible). Breathe normally and expelled air should easily pass through facemask ventilation valve. Check supplementary air supply is working by pressing centre button on LDV – then release.



Close cylinder valve and breathe down the system. The Dräger Bodyguard and SCBA whistle will alarm at 60 bar to 50 bar. Continue breathing down the system. Once empty, hold breath for approximately 8 seconds – the facemask should collapse and hold to face (indicating a positive seal).



**Button Version:** To use ADSU remove tally from display unit.

**Tally Version:** Remove tally, motion icon (K) is displayed then changes to (L).

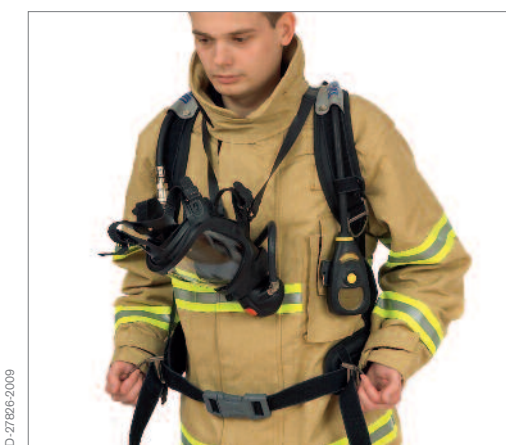
The display (L) shows system pressure and TTW. Green LED flashes to confirm operational mode.



**Removal of Apparatus:** Remove facemask, resetting LDV once face seal is broken. Close valve and vent system by pressing centre of LDV cover. Press button on LDV to reset system.

**Button Version:** Insert tally key and simultaneously press and hold the right hand and left hand buttons until the display clears. Release left hand and right hand buttons – unit is now off.

**Tally Version:** refit the tally.



Extend waistbelt straps and open waistbelt buckle.



Lift shoulder strap buckles and open fully. Remove facemask strap from neck and remove apparatus from shoulders.

**Warning:**  
Read and understand the respective instructions for use for each device before using the equipment.